

HELP STOP THE SPREAD OF GERMS

Help prevent the spread of respiratory diseases like COVID-19.

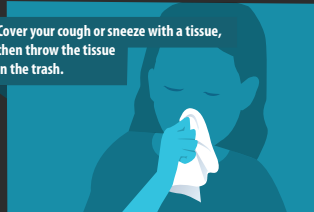
Avoid close contact with people who are sick.



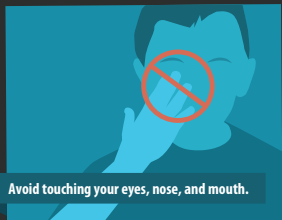
Stay home when you are sick, except to get medical care.



Cover your cough or sneeze with a tissue, then throw the tissue in the trash.



Avoid touching your eyes, nose, and mouth.



Wash your hands often with soap and water for at least 20 seconds.



Clean and disinfect frequently touched objects and surfaces.



For more information: www.cdc.gov/COVID19

CS314915-A

Stop Germs! Wash Your Hands.



Wet your hands with clean, running water (warm or cold), turn off the tap, and apply soap.



Lather your hands by rubbing them together with the soap. Be sure to lather the backs of your hands, between your fingers, and under your nails.



Scrub your hands for at least 20 seconds. Need a timer? Hum the "Happy Birthday" song from beginning to end twice.



Rinse hands well under clean, running water.



Dry hands using a clean towel or air dry them.

Keeping hands clean is one of the most important things we can do to stop the spread of germs and stay healthy.

LIFE IS BETTER WITH

CLEAN HANDS



www.cdc.gov/handwashing



WELCOME BACK!

Here are some precautions we're taking for your health and wellness as we return to safe gaming.



We are thrilled to welcome you back to the action and excitement of Tulalip Resort Casino.

We have reopened our doors with the understanding that the safety, health and well-being of our guest and team members has, and always will be, our first priority.

Daily deep cleaning procedures have been increased on the casino floor, hotel and throughout the entire property. Hand sanitizer stations are readily available and we are enforcing social distancing by limiting the number of guests.

We are strictly following the CDC's guidelines so things may look and feel a little different around the property. Here are some things you can expect:

AS YOU ARRIVE:

- **Limited entrances** will be accessible in order to maintain an accurate guest count.
- **Before entry** a touchless temperature check will be conducted.
- **A face mask will be required** for all guests entering any Tulalip property.
- **Limited guests** will be allowed inside the property at one time.

AROUND THE PROPERTY:

- **Plexiglass shields** have been installed in high traffic areas where appropriate.
- **Additional hand sanitizers** have been placed throughout the property and by slot banks for your convenience.
- **All team members will be required to wear face masks** while they are on shift.
- **Limited guests** will be allowed inside the property at one time.
- **Reduced seating capacity and spacing** will be available in open public spaces in accordance with healthy social distancing.

THE GAMING FLOOR:

- **Enhanced disinfectant cleaning procedures** will be administered frequently throughout shifts.
- **All machines will be disinfected regularly**, including attendants offering to sanitize machines for guests as they play.
- **Congregations or crowds of guests will be dispersed** in order to follow social distancing guidelines.

TABLE GAMES:

- **Limited seating and games** will be available to allow for proper social distancing.
- **Dice will be sanitized after each shooter**, and the game will be sanitized after each game.
- **High-touch gaming items will be routinely disinfected.** Cards will be refreshed more frequently.

AT THE RESORT:

- **The front desk** has been rearranged to allow for proper social distancing.
- **No entry into occupied rooms** will be allowed for team members or guest room attendants.
- **Deliveries will be dropped off at the front door** for all guest deliveries.
- **The pool, salon, spa and fitness center will remain closed** until further notice.
- **Retail shops** will be accessible following the appropriate social distancing restrictions.

ENTERTAINMENT:

- **All nightclub and entertainment venues including shows have been canceled and will remain closed** until further notice.

THE RESTAURANTS:

- **Table configurations, barstools and seating have been adjusted** to allow for proper social distancing.
- **High-touch items will be cleaned and disinfected between guests**, or replaced with disposable versions.
- **Self-serve items, such as condiments, have been removed.**
- **Refills will not be provided for self-supplied beverage containers.**
- **Bars that allow for proper social distancing will be open**, and all surfaces will be sanitized frequently.

If you have any questions or concerns, ask a team member for assistance.



TEMPORARY HOURS

MON - FRI
10AM - 2AM

SAT & SUN
OPEN 24 HOURS

FIND ALL OF THE LATEST UPDATES AND INFORMATION ONLINE AT:
TULALIPCASINO.COM

THANK YOU
FOR PRACTICING HEALTHY
SOCIAL DISTANCING

PLEASE FOLLOW ALL
SIGNAGE ACROSS THE
CASINO FLOOR.



IF YOU HAVE ANY QUESTIONS, ASK A TEAM MEMBER.